

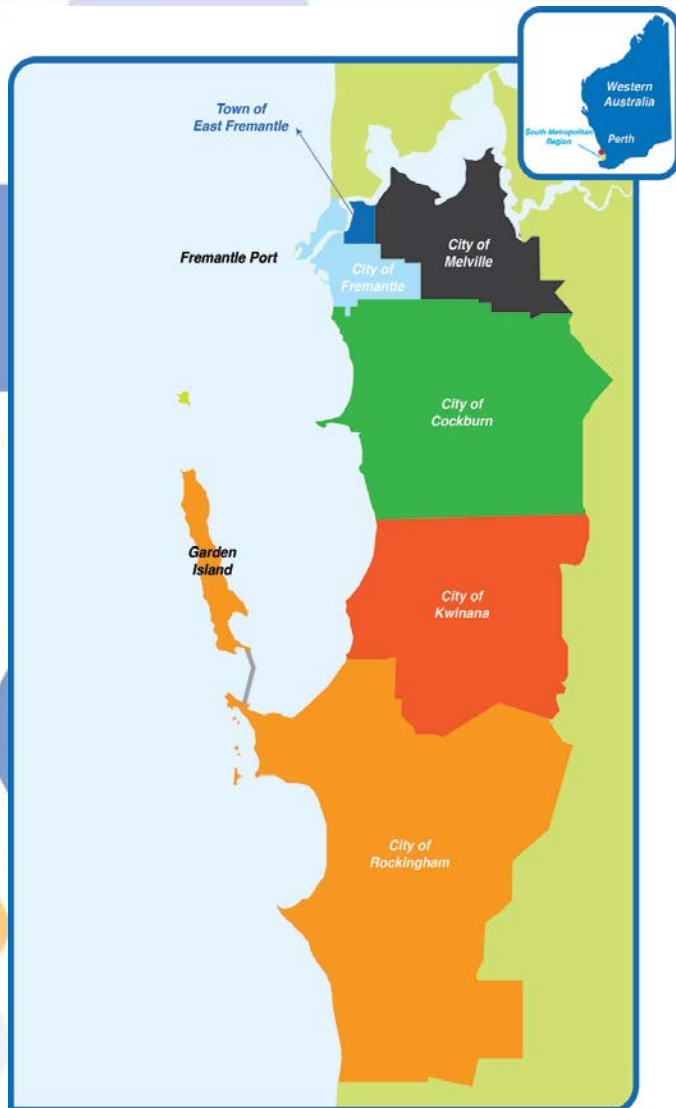


South West Group

Presentation to Federal Liberal Members, Candidates and Advisors

Thursday 13 June 2013

Mick McCarthy
Director



South West Group - Background

- Established in 1983
- Voluntary Regional Organisation of Councils (VROC)
- Member Councils
 - ***City of Cockburn***
 - ***Town of East Fremantle***
 - ***City of Fremantle***
 - ***City of Kwinana***
 - ***City of Melville***
 - ***City of Rockingham***
- Population - 397,389 (June 2012)
- Growth – 3.8% pa (WA 3.3%, Aust 1.6%)
- GRP and contribution to State's economy
 - approx \$30 Billion p/a



Key Activities of the South West Group

- Lobbying and Advocacy
- Integrated Transport and Land Use Planning
- Economic Development
- Employment and Workforce Development
- Industry and Business Support



Key Facts

- **\$1 in every \$7** is earned in the region and contributes to the State's economy
- **Over 50% of Perth's population growth** will occur in South West Metropolitan Region and Rivers Region
- **Highest proportion of industrial land** in the metropolitan region
- **Major challenges and investment required** to support growth, develop industry and establish freight corridors (road and rail)



Key Facts

- Significant under investment at State level
 - **\$1B/year from 2009/10 to 2011/12**
 - **\$600M in 2012/13**
 - **???** in 2013/14
- **\$95M** under investment per year in transport and land use infrastructure (\$380M over 4 years – Federal and State)
- Adverse impacts on productivity and revenue – Major risks to the economy



Regional Transport Action Plan

9 Strategic Regional Priority Projects

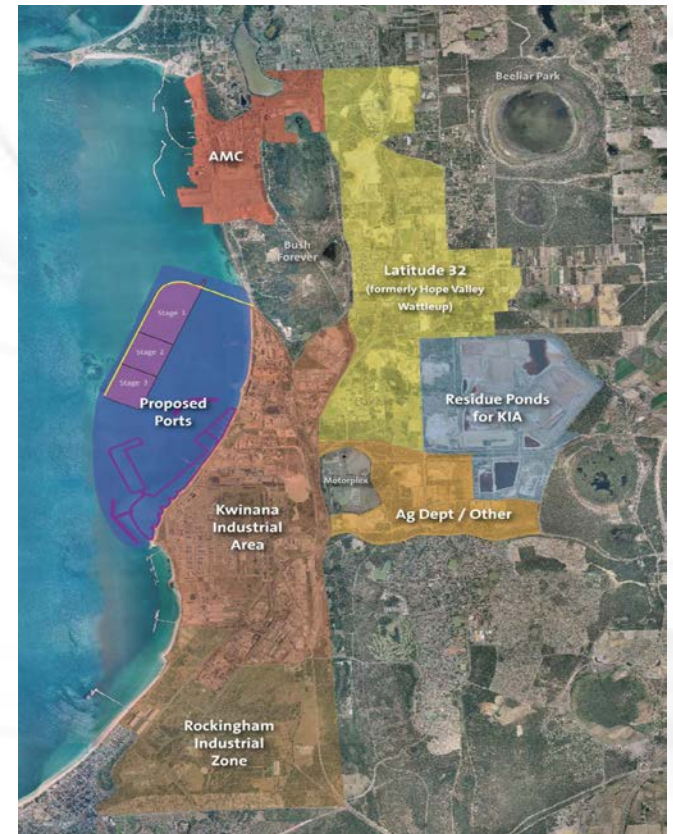
- Outer Harbour Port Gateway – New Port(s)/Latitude 32
- Murdoch Activity Centre/Jandakot City
- Cockburn Central Development and Connections
- Fremantle Inner Harbour
- Fremantle City Redevelopment
- Cockburn Coast Development
- Keralup Townsite and Karnup
- Central Transport Network
- South Eastern Transport Network



Outer Harbour Port Gateway – New Port(s)/Latitude 32

Key Elements

- Port Gate and Corridors
- Planning Study underway
- Intermodal Terminal and links to new port/s and AMC
- Expansion of AMC
- Seeking Federal support to action National Ports Strategy





Increasing Kwinana Freeway Capacity

Roe Highway to Cockburn Central

- Extension of additional lanes constructed from Leach Highway to Roe Highway
- Additional capacity and better access/egress
- Federal Government has already committed \$40M, but awaiting State funding agreement

Additional Lanes on Kwinana Freeway - Roe Highway to Cockburn Central





Stock Road as Priority Freight Corridor

- Growth in containers
- Congestion and safety impacts
- Increased use of Leach Highway, South Street
- Seeking joint action from Federal and State Government consistent with National Land Freight Strategy

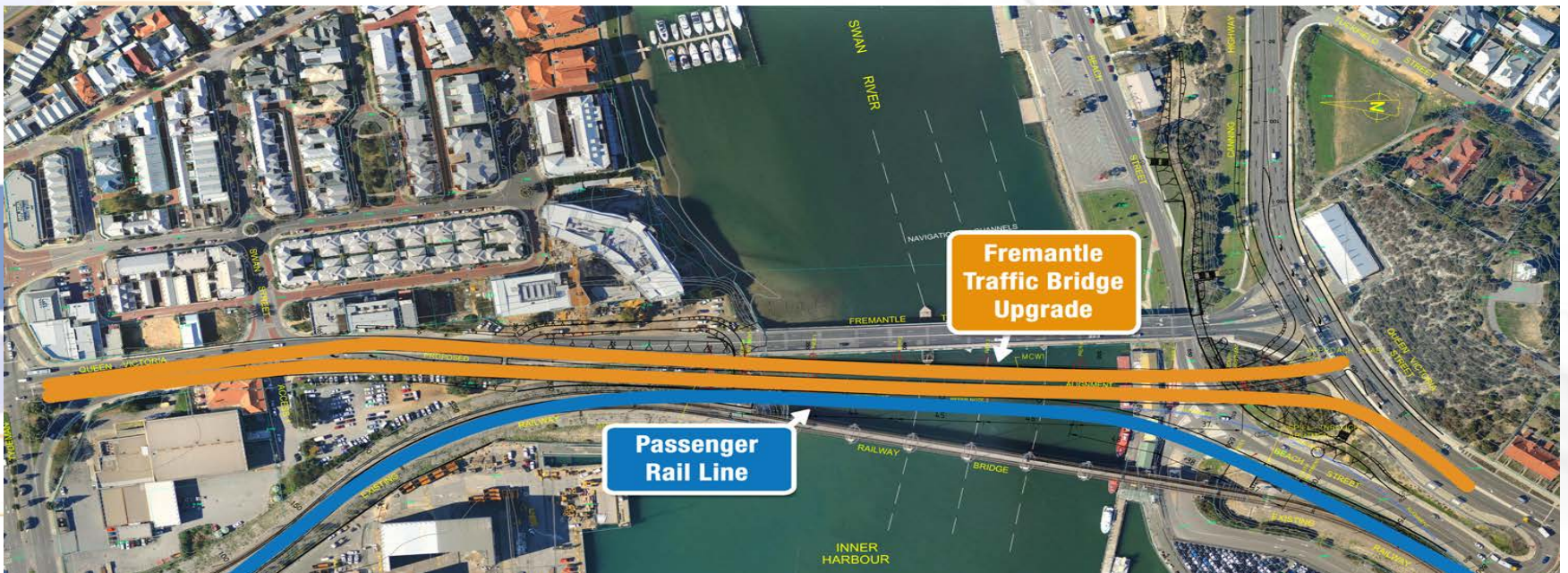
Hampton Road and Stock Road Congestion Investigations





Replacement of Fremantle Traffic Bridge

- Business Case submitted to Infrastructure Australia
- Bridge design - passenger rail, pedestrian and cycling
- Seeking Federal input into satisfying business case requirements to facilitate funding support





Industry Innovation Precinct WA Oil and Gas Bid

- 10 IIPs to be set up across Australia (2 established)
- Woodside leading oil and gas precinct bid for WA
- AMC a key feature of the bid – Gorgan, key industries
- Regional benefits for industry development, employment, training and SME support
- Seeking stakeholder support for the WA Oil and Gas IPP





Flagship Energy Efficiency Grants Program

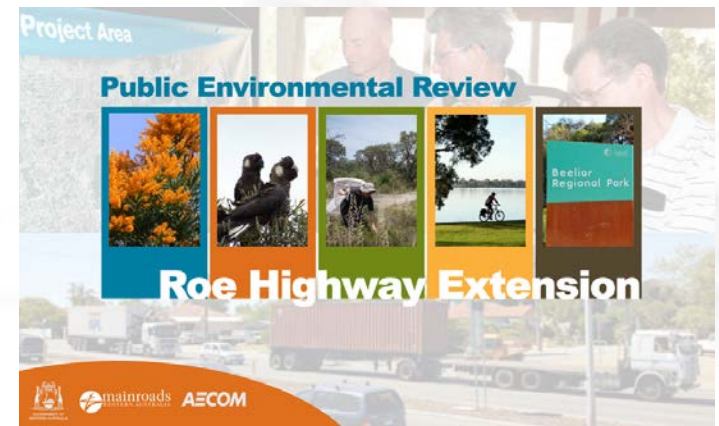
- Current Clean Energy Future grants are issue specific with variable deadlines and eligibility
- Not suited to regional scale initiatives, which need to be broken down into smaller projects to meet criteria
- Seeking to reintroduce Solar Cities Program initiated by the Howard Government





Roe Highway Extension Kwinana Freeway to Stock Road

- Major transport proposal in the region currently subject to environmental impact assessment (State/Federal)
- Varied positions amongst SWG member Council ranging from strong support to strong opposition
- SWG historically not pursued issues known to be opposed by one or more member Councils
- Decisions on environmental approvals likely to take 12 months
- Investment and funding decision required thereafter





Key Challenges

- Managing population growth pressures and the provision of infrastructure to support our communities
- Realising priorities for investment in the region and resulting benefits for the State and National economy
- Elevating freight as the key transport planning challenge in the region requiring significant investment and coordinated, collaborative action
- Securing commitments and funding support to plan, develop and implement regional transport infrastructure projects (State, Federal, Local, PPP)



Questions and Discussion

Further information

director@southwestgroup.com.au

www.southwestgroup.com.au/priority-projects