



Overview

The June 2015 South West Group Bulletin is the fifth of a series of communications aimed at keeping stakeholders in the region informed on the activities and initiatives of the South West Group.

Maintaining and enhancing positive working relationships with our key stakeholders is a priority activity that will continue to feature strongly for the South West Group as it seeks to influence investment and policy decisions that benefit the region. In this edition, the South West Group:

- showcases the 2015 economic development tour of Melbourne and Sydney to examine best practice climate change adaptation
- outlines the key focus areas and priority issues included in the Strategic Plan 2015 to 2025
- provides examples of recently lodged South West Group submissions with regional implications
- outlines recent budget announcements by the Federal and State government on transport infrastructure investments planned for the region
- reports on past and upcoming events involving presentations by the Director South West Group and regional briefings.

Both the Victorian and NSW State Governments have clear policies and plans to address climate change adaptation, supported by funding programs that Local Government can access to undertake regional and local projects and research.

Some of the highlights included:

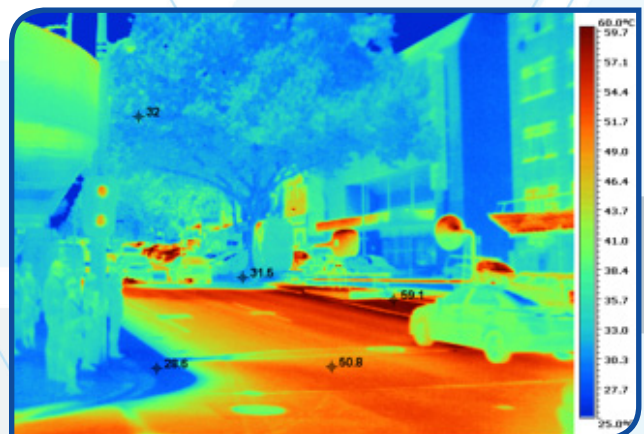
- thermal mapping in the City of Melbourne
- investment in stormwater harvesting to provide sustainable irrigation supplies and increase resilience to drying climate
- dune restoration and stabilisation along the Carrum foreshore, including an innovative boardwalk access path.

A detailed report on the tour can be found on the South West Group website at: <http://www.southwestgroup.com.au/south-west-group/publications/economic-development-tour-reports>

Economic Development Tour – Climate Change Adaptation

The South West Group Board and a number of member Council Directors undertook the economic development tour of Melbourne and Sydney in early April 2015 to examine leading edge initiatives on climate change adaptation across the State and Local Government sectors.

The tour included full day presentations, hosted by the municipal associations in each state being the Municipal Association of Victoria (MAV) and Local Government New South Wales (LGNSW), as well as site visits to see how these best practice projects translate into on-ground work.



Above: Thermal imaging in the Melbourne CBD



Strategic Plan 2015 to 2025

The South West Group Board adopted its Strategic Plan 2015 to 2025 in May 2015.

The new vision for the region is “The economic gateway to the west” and seeks to differentiate the South West Metropolitan Region from other regions, whilst building on its competitive strengths.

The South West Group’s mission is to “Be informed, responsive and respected as the economic gateway to the west” and the South West Group will “Collaborate to maximise quality of life within the region by influencing and informing future planning and infrastructure delivery”.

The focus areas and strategic priorities for the South West Group will be:

- Liveable communities
 - Urban development and housing
 - Activity centres and corridors
 - Natural environment
 - Regional community infrastructure and services
- Climate change adaptation
 - Research and mapping
 - Strategic planning for climate change adaptation
- Trade, freight and logistics
 - Transport of people
 - Freight and logistics infrastructure
- Knowledge and education
 - Skills development and training
 - Employment and work experience
- Industry and employment
 - Employment and innovation hubs
 - Promotion and economic development
 - Tourism investment

The South West Group will be working with key stakeholders and through its committee structures to identify priority strategies and actions for implementation into the future.

A copy of the South West Group Strategic Plan 2015 to 2025 can be found via the link:

<http://www.southwestgroup.com.au/south-west-group/strategic-plan>



Submissions Respond to Key Regional Issues

The South West Group, as part of its regional advocacy role, lodged a number of submissions on Federal and State Government initiatives over the past six months on issues relevant to the South West Metropolitan Region including:

- Review of WA Electoral Boundaries 2015 to the WA Electoral Commission in May 2015
- Review of Waste Avoidance and Resource Recovery Act 2007 to the Department of Environment Regulation in March 2015
- Federal Electoral Boundaries for the Western Australian Redistribution to Australian Electoral Commission in March 2015
- Swan Region Strategy for Natural Resource Management (NRM) 2014 to Swan Region NRM in February 2015
- Federal and State Government Budget Submissions in January 2015

Copies of the submissions are available via the following link to the South West Group website:

<http://www.southwestgroup.com.au/south-west-group/submissions/2015>

Federal And State Budgets 2015/16 – Infrastructure and Capital Investments in the Region



The Federal and State budgets for 2015/16 were announced on 12 and 14 May 2015 respectively, including forward estimates to 2018/19.

Below is a summary of infrastructure investments announced specific to the region, noting that a range of state based funding such as grants and other funding programs (e.g. Financial Assistance Grants, Road to Recovery, Black Spot programs) also have applicability to infrastructure investment in the region by the member Councils.

Federal Government – Contributions to Transport Infrastructure

- **Perth Freight Link** - \$925 million from Federal

Government (2015 to 2018), with \$87.9 million for 2015/16. WA Government committing \$650 million. Pending decision by State and Federal Government on environmental approvals.

- **Leach Highway (High St)** – Project forms part of Perth Freight Link, with Federal contribution capped at \$59 million (50% of cost).
- **Kwinana Freeway** – Roe Highway to Armadale Road (southbound) – Federal contribution capped at \$31.3 million (50% of cost).
- **\$499.1 million for GST Revenue Shortfall** – Funding provided mostly for north of the river projects, however increased Federal contribution toward the \$14.9 million additional lane on the Kwinana Freeway extension south, Armadale Road to Russell Road.
- **HMAS Stirling** for lower level bridge repair - \$6.4 million

<http://www.southwestgroup.com.au/south-west-group/submissions/federal-budget/>



State Government – Major Projects in the South West Metropolitan Region

- **Perth Freight Link** - \$143.9 million (total State contribution \$650 million)
- **Fremantle Port** - \$44.2 million on works at to maintain services at the Inner Harbour, facilitate developments at Victoria Quay (including those identified in the Fremantle Waterfront Masterplan), infrastructure upgrades, plant and equipment at Kwinana Bulk Jetty
- **Education Facilities** - \$31.4 million on education facilities, including the new senior high school in South Baldivis and the amalgamation of the Hamilton and South Fremantle senior high schools into the new Fremantle College
- **Kwinana Freeway Widening** - \$33 million on upgrades to the Kwinana Freeway (widening south bound) between Roe Highway and Russell Road
- **Challenger Institute of Technology (Murdoch Campus Stage four)** - \$24.1 million
- **Aubin Grove Train Station**, Russell Road bridge widening & traffic congestion solution - \$45.4 million

● Cockburn Central Police Station - \$10.7 million

The total investment in capital expenditure in the South West Metropolitan Region for 2015/16 is estimated at \$377.2 million and forward estimates showing expenditure between \$540 million and \$650 million, noting that Perth Freight Link represents a large component of the planned spend.

Year	2014/15	2015/16	2016/17	2017/18	2018/19
Total	\$338.8M	\$377.2M	\$598.8M	\$651.9M	\$543.9M

More detailed breakdowns on capital expenditure items relevant to the South West Metropolitan Region contained in the Federal and State Budgets 2015/16 can be requested from the Director South West Group.

<http://www.southwestgroup.com.au/south-west-group/submissions/state-budget/>

Events

Past Events

● Presentations on the South West Group Regional Biodiversity Mapping and Analysis Project

The South West Group engaged the Western Australian Local Government Association (WALGA) Perth Biodiversity Team to undertake a Regional Biodiversity Mapping and Analysis project covering the South West Metropolitan Region. This work has been highly commended and recognised as an innovative local government approach to landscape scale biodiversity planning, protection and management.

The Director of the South West Group has presented this work to a number of forums including:

- Strategic Assessment of Perth and Peel Region (SAPPR) Senior Officers Group – 12 February 2015
- Western Australian Planning Commission (WAPC) Chair and Senior Department of Planning staff – 3 March 2015
- WALGA Local Government Briefing on SAPPR – 20 May 2015

Copies of the presentations are available on request or can be downloaded via the South West Group website at:

<http://www.southwestgroup.com.au/south-west-group/presentations>

Upcoming Events

● Sub-regional Planning Frameworks

The WAPC recently released its draft Sub-regional Planning Frameworks "Towards Perth and Peel@3.5 Million" for a public comment period closing on 31 July 2015.



SOUTH WEST GROUP

WALGA and the Department of Planning are jointly coordinating a series of sub-regional briefings for Local Governments and other stakeholders to assist the sector in preparing submissions on the draft frameworks.

South Metropolitan and Peel Sub-regional Planning Framework Briefing – Wednesday 24 June 2015

The South West Group has partnered with WALGA to host a briefing on the South Metropolitan and Peel Sub-regional Planning Framework from 9.30am to 12.30pm on Wednesday 24th June 2015 at the City of Rockingham Reception Room.

The South Metropolitan and Peel Sub-region includes the growth councils in the South West Metropolitan Region, namely the cities of Cockburn, Kwinana and Rockingham.

Central Sub-regional Planning Framework Briefing – Thursday 25 June 2015

WALGA is also hosting a briefing for the Central Sub-region from 1.00pm to 3.30pm on Thursday 25 June 2015 at the WALGA Boardroom, 170 Railway Parade, West Leederville.

The Central Sub-region includes the developed Councils in the South West Metropolitan Region, namely the Town of East Fremantle and the Cities of Fremantle and Melville.

Senior Department of Planning representatives will be in attendance to present the draft frameworks and answer any questions.



To RSVP for these briefings, please contact WALGA on 08 9213 2000 by 22 June 2015.

Carrum foreshore in the City of Kingston, Victoria – dune restoration and boardwalk access path.



Contribute

If you would like to contribute to the Quarterly Bulletin, please contact the South West Group for further details on: director@southwestgroup.com.au



Feedback

The South West Group exists to inform you on issues you want to hear, please email any feedback to the South West Group on: director@southwestgroup.com.au



Subscribe

First name:

Surname:

Email:

Organisation:



Contact

SOUTH WEST GROUP

10 Almondbury Road, Booragoon WA 6154
Locked Bag 1 Booragoon WA 6954
T: +61 (8) 9364 0631
F: +61 (8) 9364 0285
E: director@southwestgroup.com.au
www.southwestgroup.com.au

